



ARKANSAS SCHOOL

FOR MATH, SCIENCES, + THE ARTS

2023-24 SCHOOL PROFILE



Arkansas' Premier Public High School

The Arkansas School for Mathematics, Sciences, and the Arts is a specific investment by the General Assembly in the state's most talented and promising young minds. Each year, 10th-, 11th-, and 12th-grade students from across Arkansas come to ASMSA to live and learn within a community of 250 intellectual peers. The residential experience combines college-level coursework, dynamic faculty, advanced research opportunities, diverse experiences within the arts, study abroad trips, and more to create an educational community unlike any other in Arkansas.

School Mission

The Arkansas School for Mathematics, Sciences, and the Arts, a campus of the University of Arkansas System, is a public residential high school serving academically and artistically motivated students of all backgrounds from throughout the state. ASMSA's community of learning exemplifies excellence across disciplines while serving as a statewide center of academic equity and opportunity that ignites the full potential of Arkansas' students and educators.

Student Transcripts

ASMSA's main point of entry is for juniors, but two pilot programs for sophomore enrollment exist. ASMSA issues a unified transcript that includes high school coursework from both the sending school and ASMSA that reflects the appropriate grade level of academic achievement at their local, community school as well as coursework completed in residence during their two or three years at ASMSA.

Unweighted GPAs are reported on a 4.0 scale. Weighted GPAs are tabulated for colleges that consider them. A quality point

is added for each course completed for concurrent credit taken through University of Arkansas at Fort Smith as well as additional high school courses approved for weighted credit by the Arkansas Department of Education's Division of Elementary and Secondary Education. Concurrent courses receiving either 3 or 4 hours of college credit are awarded 1 unit of ASMSA credit toward completion of high school graduation requirements per ADE regulations.

Because the majority of disciplinary events are related to unique community standards and expectations, ASMSA does not report discipline as part of the college admissions process. Due to the selective nature of ASMSA and the overall strength of our student body, **ASMSA does not calculate students' class ranks.**

COVID-19 Statement

Students enrolled in ASMSA's Class of 2024 experienced the most disruptive period of the pandemic during the transition between middle and high school. Due to ASMSA's enrollment structure—wherein the majority of students enroll at 11th grade—this often meant that current seniors experienced significant inconsistency in the level of support, academic experience, and institutional adjustments based on the resources available at their sending high schools. ASMSA has attempted to adjust for this academically, but there are cases where students were not as positioned to accelerate to their full potential based on previously available opportunities.

ASMSA resumed full residential operations in Fall 2020 while implementing various protocols to mitigate the spread of COVID-19 on campus. Through a commitment to shared responsibility, students have found stability and normalcy during this period of considerable uncertainty for many public schools. Academic, social, and mental health programs have been offered to scaffold their development over the course of the pandemic. When learners have been placed in quarantine due to exposure or isolation as a result of positive COVID testing, students have been able to continue to engage synchronously in live classroom experiences online.

ACT Range	Unweighted GPA Range
32 High (75%)	3.95 High (75%)
28.5 Mean Composite	3.78 Mean GPA
26 Low (25%)	3.71 Low (25%)

Scores updated September 2023

At present, the Class of 2024 includes 113 students.



NCSSS
National Consortium of
Secondary STEM Schools



arts schools network

CEEB Code: 041148

200 Whittington Ave.
Hot Springs, AR 71901
Main Phone: 501-622-5100
Fax: 501-622-5179
Web: www.asmsa.org
Social: /ARMathSciArts

Office of Student Success

Bret Vallun, Assoc. Dean/College Counseling
vallunb@asmsa.org; 501-622-5129
Erica Arivette, Student Success Coordinator
arivettee@asmsa.org; 501-622-5175
Penny Lock, Student Success Coordinator
lockp@asmsa.org; 501-622-5176

Campus Leadership

Corey Alderdice, Director
alderdicec@asmsa.org; 501-622-5115
Stuart Flynn, J.D., Dean of Academic Affairs
flynnns@asmsa.org; 501-622-5111
Rheo Morris, Ph.D., Dean of Students
morrisr@asmsa.org; 501-622-5174





ARKANSAS SCHOOL

FOR MATH, SCIENCES, + THE ARTS

2023-24 SCHOOL PROFILE



Academic Engagement through a "College Bridge" Experience

ASMSA offers a "college bridge" program where each student earns at least 30 hours of college credit through our partnership with UA-Fort Smith. ASMSA's Concurrent Core consists of classes across composition, literature, history, global languages, math, biology, chemistry, physics, and computer science. Students must also satisfy state graduation requirements in social sciences, art, and other subjects. Nearly 70 courses are available for college credit. ASMSA has chosen to pursue partnership credit instead of Advanced Placement coursework in order to provide our talented faculty with the flexibility to create a more dynamic and engaging set of classroom experiences for students.



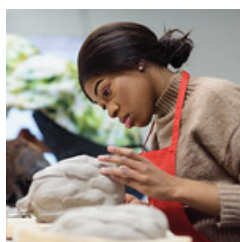
College Readiness through Residential Education

While college readiness is often defined by ACT benchmarks or other standardized exams, the residential experience offered to ASMSA students emphasizes independent living, autonomous decision-making, leadership development, cultural diversity, emotional wellness, and other life skills. As students transition to life on college and university campuses, their residential education is equal to their classroom experiences in preparing them for the steps ahead.



Capstone Projects and Learning Beyond the Classroom

ASMSA students have the opportunity to conduct real-world explorations guided by faculty mentors. Students invested in STEM disciplines complete a research project on a subject of their choice, often leading to recognition at the state and international science fairs. Arts and Humanities students have the option of completing a capstone project or a portfolio of creative works. All students are encouraged to participate in prominent state, regional, and national competitions that provide an opportunity to share their research and talents with an external community as well as receive peer and professional feedback.



Study Abroad and Global Learning

ASMSA's Global Learning Program opens doors of possibility to students as they explore other languages and cultures through multiple study abroad excursions and visits from international guests. Students are also selected annually for immersion programs like the National Security Language Initiative for Youth. Over the past decade, more than 500 ASMSA students have studied abroad.



EARNING NATIONAL RECOGNITION

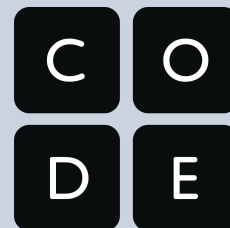
ASMSA has consistently earned recognition as one of the nation's top public high schools.



#1 in Best Public High Schools in Arkansas and #46 nationally in 2024 Niche.com rankings



#21 nationally in Study.com's list of top STEM high schools



Recognized by Code.org as a Champion of Computer Science

INSTITUTIONAL ACCOLADES

100%

College Matriculation or Military Enlistment

35

students have represented Arkansas at the Intel ISEF over the past five years, including 2 Regeneron STS Scholars.

9

members of the Class of 2024 have been named National Merit Semifinalists.

\$300

million in college scholarships have been awarded to ASMSA alumni.

STUDENT DIVERSITY

33%

of students are from families qualifying for federal school meal programs.

34%

of recent graduates come from Arkansas Delta counties.

37%

of recent graduates are on the path to becoming the first member of their family to earn a college degree.

38%

identify as students of color.

Ethnicity	Total	Percentage	Arkansas Percentage
American Indian	0	0.0%	1.0%
Asian	38	15.5%	1.7%
African-American/Black	26	10.3%	15.7%
Hispanic/Latino	11	4.4%	7.7%
Caucasian/White	145	57.5%	72.2%
Multitple/Other/Unknown	31	17.3%	2.2%



ARKANSAS SCHOOL

FOR MATH, SCIENCES, + THE ARTS

2023-24 SCHOOL PROFILE



SIX WAYS ASMSA PREPARES STUDENTS FOR COLLEGE AND BEYOND



Close Contact
ASMSA has a faculty-to-student ratio of 1:9 and counselor-to-student ratio of 1:51.



Real-World Research
All students undertake and complete an independent capstone project spanning junior and senior years.



College-Level Academics
ASMSA graduates finish high school with an average of 50 hours of college credit.

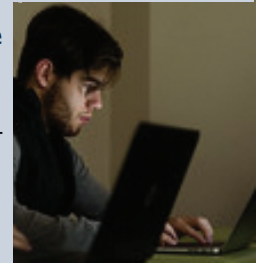
Diverse Learners
ASMSA has the highest percentage of low-income students at any of the nation's 17 public residential STEM schools.



Global Citizens
ASMSA is committed to international engagement through study abroad, language immersion, and other partnerships.



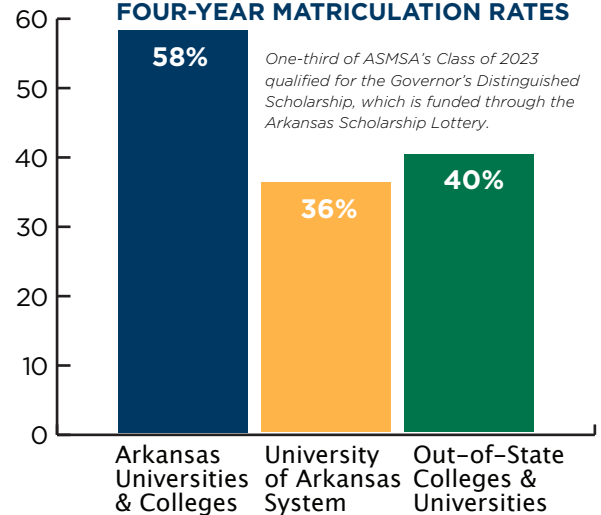
Coding the Future
ASMSA was the first high school in Arkansas to require a computer science class in order to graduate.



COLLEGE MATRICULATION CLASSES 2020-2023

Agnes Scott College	Georgia Institute of Technology	Mississippi State University	Scripps College	University of Iowa
Amherst College	Grinnell College	Missouri State University	Southern Ark. University	Univ. of Memphis
Arkansas State University	Harvey Mudd College	Missouri Univ. of Science and Technology	St. Louis University	University of Mississippi
Arkansas Tech University	Henderson State University	Murray State University	Stanford Univ.	University of Missouri
Ball State University	Hendrix College	National Park College	Tennessee State University	University of Missouri-Kansas City
Baylor University	High Point University	New York University's Tisch School of the Arts	Texas A&M University	University of New England
Boston University	Hollins University	Northeastern University	Thomas Jefferson University	University of Oregon
Bowdoin College	Howard University	Northwestern University	Tufts University	University of Pennsylvania
Bradley University	Illinois Institute of Technology	Ohio State University	Tulane University	University of Richmond
Brown University	Indiana University Bloomington	Oklahoma State University	University of Alabama	University of Rochester
Carleton College	John Brown University	Otis College of Art and Design	Univ. of Alabama-Huntsville	Univ. of South Florida
Carnegie Mellon University	Johns Hopkins University	Quachita Baptist University	University of Arizona	University of Texas at Dallas
Centenary College	Kansas City Art Institute	Philander Smith College	University of Arkansas	University of Tulsa
Coe College	Louisiana Tech University	Pomona College	Univ. of Ark.-Fort Smith	Univ. of Vermont
Colby College	Loyola University	Pulaski Technical College	Univ. of Arkansas-Little Rock	University of Wisconsin-Madison
College of Wooster	Luther College	Purdue University	Univ. of Ark.-Rich Mountain	Vanderbilt University
Colorado College	Lyon College	Rhode Island School of Design	University of Central Arkansas	Washington University-St Louis
Columbia University	Macalester College	Rhodes College	University of Central Missouri	Willamette University
Cornell University	Massachusetts Institute of Technology	Rice University	Univ. of Chicago	Yale University
Cornish College of the Arts	Miami (Ohio) University	Savannah College of Art and Design	University of Denver	
Denison Univ.	Milwaukee School of Engineering		University of Florida	
Eckerd College	Mississippi College			
Embry Riddle Aeronautical University				
Emory University				
Georgetown University				

FOUR-YEAR MATRICULATION RATES



COLLEGE MAJORS OF CHOICE FOR RECENT GRADUATES (2020-23)

